



THE ALPHACRON

**PHI KAPPA TAU**

LAFAYETTE COLLEGE



# To the Class of '73

## President's Message



This booklet is designed to provide you with a brief look at the Alpha Omicron Chapter of Phi Kappa Tau. It is a picture of the social and athletic events, the extra curricular activities, and the scholastic achievements of our brothers.

Traditionally, the brothers of Phi Kappa Tau have combined their fraternal activities with a broad participation in college life. Phi Kappa Tau has contributed more than its share of campus leaders over the past years, and we are well-represented in most college activities. In addition, it is our policy to invite a faculty guest to dinner at least once a week, thereby promoting a better understanding of the Lafayette community. We are pleased with these past records, and they inspire us toward even greater achievement in the future.

Phi Tau at Lafayette is unique in that the brothers come from widely diverse backgrounds, with differing interests and beliefs, yet they are all bonded together by common ideals. At Phi Tau, no brother submerges his individualism; all brothers strive for common goals. By giving of ourselves, we achieve a more mature feeling for others, and a better understanding of ourselves.

Alumni are always welcome at our chapter. They enjoy meeting the present brotherhood and their old classmates. They are pleased to see tradition, spirit, and fraternity in dynamic equilibrium.

Your choice of a social living group will be perhaps the most important decision you will make while in college. Your fraternity brothers will be your close friends for the next three years, and perhaps for the rest of your life.

For this reason, you should look beyond the externalities of a social living unit. You should seek a living tradition, a vital spirit beneath the activity of the moment. And these intangibles can only be sensed by meeting and getting to know the brothers.

We sincerely hope you will take the opportunity afforded by rushing to do so.

Robert G. Natelson  
*President*

**THE ALPHACRON**  
**PHI KAPPA TAU**  
**LAFAYETTE COLLEGE**

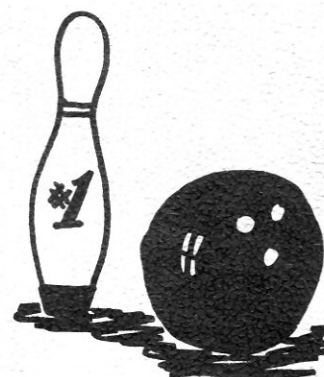
# Phi Tav. . . . on Field and Court



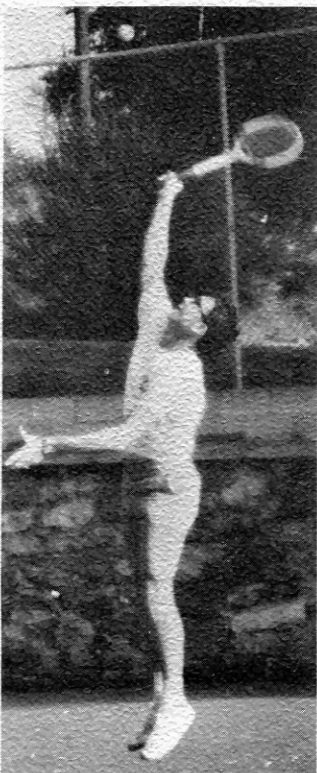
Steve Sharp: founded the rugby team here at Lafayette.



Quarterback Willie charges forward.  
Don't ask the score.

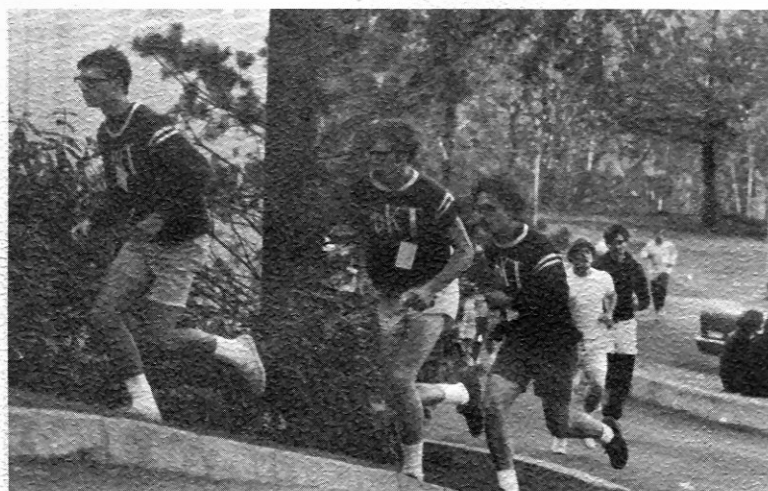


I.M. Bowling — tie for first place.

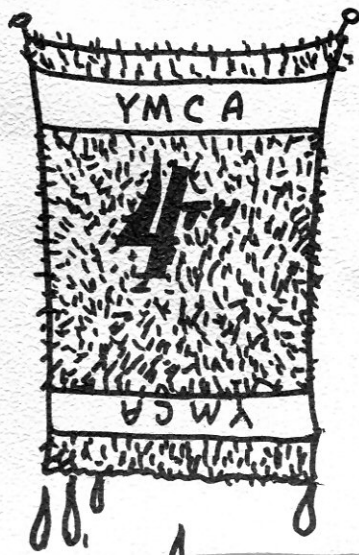


Bob Griffin: with Pete Goodspeed placed first in league.

Goodspeed went on to place third in singles campuswide.



Phi Taus Gallup in the lead: first place in cross country.



Swimming:  
Fourth place.

I M football	(censored)
I M tennis	1st
I M bowling	1st (tied)
I M billiards	3rd (tied)
I M swimming	4th
I M wrestling	2nd
I M cross country	1st
I M paddle ball	1st
I M baseball	(censored)
I M track	(censored)



# SOCIAL LIFE AT PHI TAU



Come on in! Relax! We've got . . .



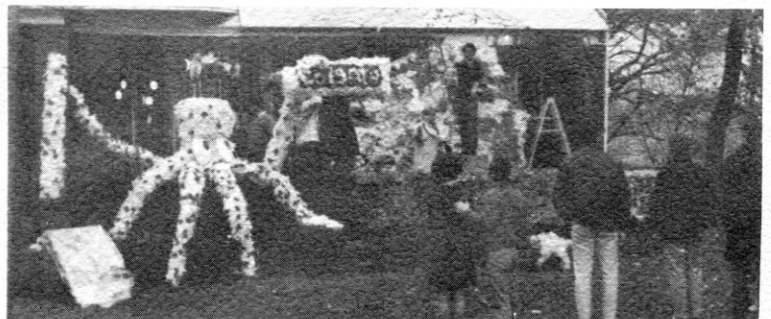
Lively chatter . . .



Quiet Conversation . . .



Pretty girls! Ah!

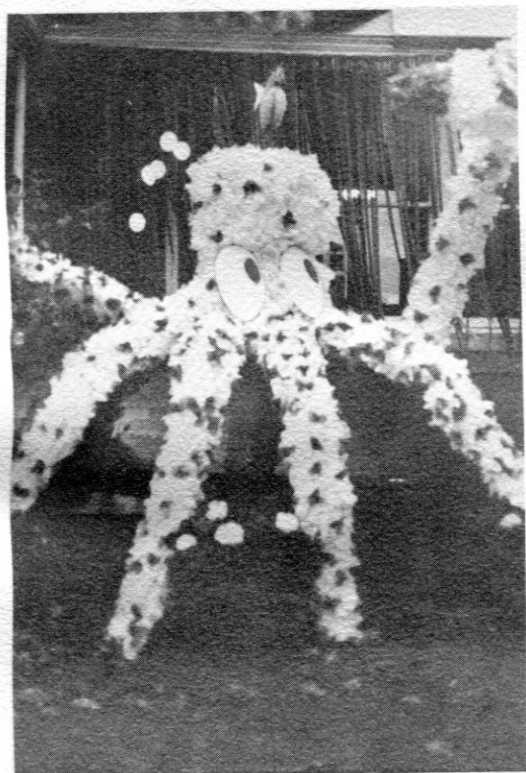


"Being several days in preparation,  
a splendid time is guaranteed for all."

# AWARDS ...



Annual Step singing Contest — 1st prize — won for the second time in four years.



Octopus's Garden: I.F. display contest — 1st prize. Dan Schriver, Chairman.



Phi Tau's on the *Lafayette* staff. Back row: Dick Bondy, Randy Beach, Art Goldsmith, Peter Goodspeed. Front row: Lenny Needle, Rob Natelson, Jerry Wein.



Members of the Glee Club: Steve Sharp, Dwight Weller, Ed Bartosh, Ken Ross.

## ... and ACTIVITIES

### Band

Robert Natelson  
Richard Kuszma  
Randy Beach  
Jerry Wein

### Maroon Key

Bill Hard  
Lenny Needle

### Knights of the Round Table

Robert Natelson  
Lenny Needle

### College Church Elders

Randy Smedly  
Merrill Cook  
Ray Beauvais  
Ken Ross



# SCHOLARSHIPS

Phi Tau at Lafayette has consistently dispelled the myth that fraternity life is incompatible with scholastic achievement. Last year, we placed fifth among all living groups with a 2.70 average. We have maintained this record of high achievement for the past seven years. In 1967 we were awarded the Phi Kappa Tau Foundation award for greatest achievement and improvement.

Last year 15 brothers were named to the Deans list for their academic achievement. These include: Ken Christy, Tim Church, Mike Cohen, Jim Forbes, Art Goldsmith, Gary Greenfield, Bill Hard, Dick Kuzma, Gil Long, Bruce Machado, Rob Natelson, Len Needle, Sid Pomper, Ken Ross, and Steve Zamore.

In addition, several brothers have won academic prizes and hold membership in several scholastic fraternities. Steve Zamore received the Coleman Biblical Prize. Bob Griffin and Art Goldsmith are members of Psi Chi, the honorary psychology fraternity. Rob Natelson is a member of Phi Beta Kappa and Phi Alpha Theta, the history honorary. Merrill Cook and Ken Christy participate in the McKelvy scholars program.

Six brothers are doing honors work in their respective majors. These are Gary Greenfield in eco-



nomics; Jerry Wein, Dick Bondy, and Jim Forbes in English; and Len Needle and Sid Pomper in government and law.

All new members will be asked to live up to this ideal and will be given assistance by all brothers. We have a program of personal tutoring and a comprehensive file of sample examinations to assist brothers in attaining academic excellence.

Randall Beach  
Scholastics Chairman

## STATEMENT ON PLEDGING

The pledge program at Phi Kappa Tau is designed for the purpose of integrating the pledge class and the brotherhood, unifying the pledge class as a whole, and educating the individual pledge in the history and traditions of the fraternity. These goals are sustained throughout the pledging period and remain as major ideals of the brotherhood.

It is the policy of Phi Kappa Tau to instill these ideals into the pledge class with the purpose of initiating them into the brotherhood as soon as possible. There will be no infringement on the personal morals of the pledge, his sense of honor as a gentleman, or his responsibility to academics.

We, as pledge masters, intend to be not only a source of communication between the pledge class and the brotherhood, but also a source of advice and counsel to the individual pledge in whatever problems he might encounter during pledging or problems of any other nature.

Dwight Weller  
Steve Sharp

## EXPENSES

Phi Tau is proud that it has kept its costs among the lowest at Lafayette. You, entering the fraternity, most certainly have the right to know what the expenses are. There are no special assessments.

Board .....	\$ 72.00 monthly
	(including 17 meals per week and an open kitchen)
Room .....	\$171.00 semester
Social .....	\$ 7.00 monthly
Chapter Fee .....	\$ 7.00 monthly
Pledge Fee .....	\$ 12.50 once
Initiation Fee .....	\$ 82.50 once



Pledge pin of Phi Kappa Tau



Ed Bartosh: Eddie has engineered chaos throughout his Phi Tau years. Our Media man is known for his sneakers, appetite, and pet computer.



Randy Beach: Shangra-La's "meatball comedian" majors in English and occasionally functions as Scholastics Chairman.



Ray Beauvais: Bovis makes things boil in the physics lab as a student and in the kitchen as our commissar. The pride of Parsippany, N. J. makes his own breaks on the rugby field.

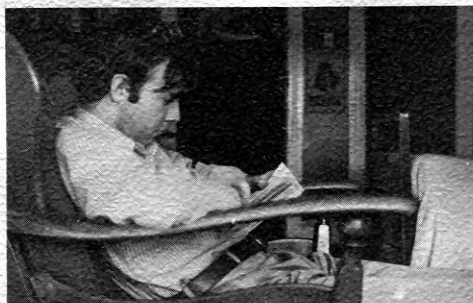


Dick Bondy: Our social chairman from North Salem, N. Y., loves his Triumph Spitfire and the third floor triple. English major.

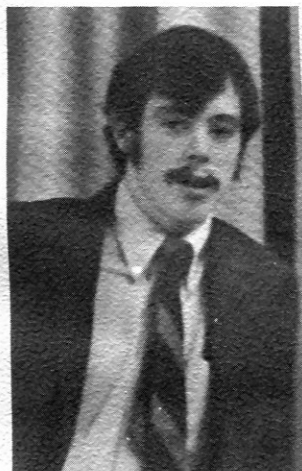
# MEET THE BROTHERS



Mike Cohen: New Hyde Park's #1 economist, Wha indulges in girl watching, jazz, and other cultural pursuits.



Jim Forbes: Look, look! See the English major! He lives in Merrick, N. Y. He is musical. He is an aristocrat. He is also depraved.

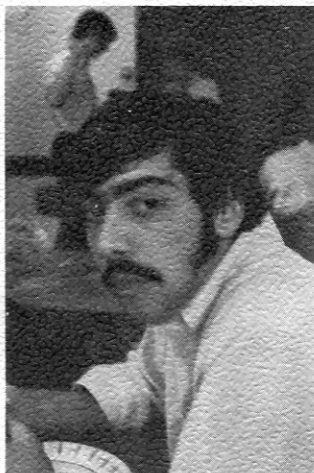


Tim Church: Someone from Sheboygan, Wisconsin can't be all bad. V.P. T.C. occasionally takes time out from running the house to flunk B.S. Math.





Merill Cook: Co - captain of the God Squad, this Youngstown stallwart fights the never - ending battle for truth, justice and the Lafayette College Student Council. A. B. Math.



Bob Coraor: A Chemistry major from Wilmington, Del., Bob took all the pictures except his own. It shows. IM wrestling champion, 135 lbs.



Ken Dallmeyer: Our resident fix-it man from Madison, Conn. aspires to be a Chem Engineer.



Art Goldsmith: Art aspires to educate mankind. The Psych major from South River, N. J. is never short of sagic sayings.



Peter Goodspeed: Deceptively quiet chemical engineer from Lynfield, Mass. placed 3rd in tennis this fall. Ask him to pronounce "Harvard."



Gary Greenfield: Besides economics, Greenie's interests include N. Y. teams, steaks, and blondes. The Roslyn, L. I. tennis star (5th in varsity) is busy planning his second million.



Bob Griffin: An impeccably dressed Psych major from Erie, Pa. Quick wits, patient ear and ready laugh if he gets enough sleep.



Bill Hard: Our house athlete is the original Hard worker. Mr. Treasurer, an International affairs major, lists Savannah, Ga. as home.





**Dick Kuzma:** Dino majors in bridge with a little history on the side. An unsung house tool, he hails from Montclair, N. J.



**Rob Natelson:** Phi Beta Kappa, K.R.T., Editor-in-Chief, President Rob gets the job done. Patient, logical, and always controversial, he's from Stony Point, N. Y. A.B. History.



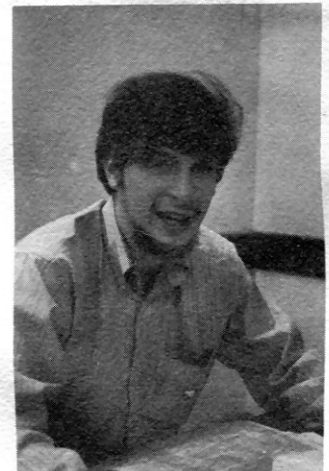
**Gil Long:** Gil tied the knot with Debbie last year and the pictured proud pater profers the pint-sized product, Eric. The breadwinner is going for a B.S.



**Lenny Needle:** Quiet creativity marks the stud from Laurence, Mass. Len, a government major, never flubs a cue for a punch line. News editor for the paper.



**Ed Mendenhall:** Blesses with the nickname "Horns," Eddie's a physic major from the Philly suburb of Lansdowne. Coached our cross country team to first place.



**Sid Pomper:** Sid sings and the girls swoon. A product of Berkeley Heights, N. J., this government major can be seen heading out of town every weekend.



**Dan Schriver:** Our mighty mite masterminded the award-winning I.F. display, repainted the ladies' head, and designed the house scrapbook. Probable English major from Chambersburg, Pa.

**Ken Ross:** Ye Olde Editor indulges in occasional doggerel in his capacity as English major. Born in Huntingdon Valley, Pa., he lives in the Gourd.

**Jack Sheets:** Jack and Cathy live over by the gym. A chem engineer from Malvern, Pa., Jack is frequently a fourth at Dino's bridge marathons.



Steve Sharp: The Phi Tau minstrel is an able mat man, too (IM champ in class), Senior Pledge Master, B.S. civil engineer Coastville, founded rugby team, president of Glee Club.



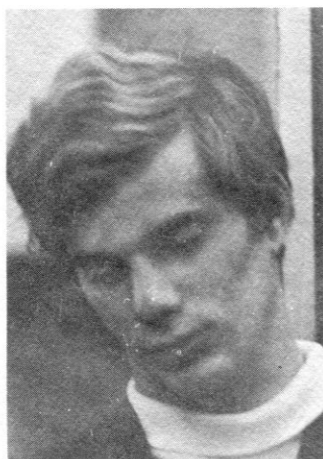
John Shields: ROTC sargeant and house Sargeant-at-Arms. A cool head under pressure, he may someday decide his major. From Stockton, N. J.



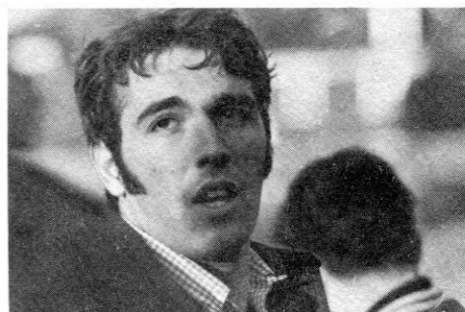
Ted Spiro: Joyce's lover boy has proven Easton girls aren't bad. "Poor ole' Spiro," of Middletown, N. J. may some day decide his major.



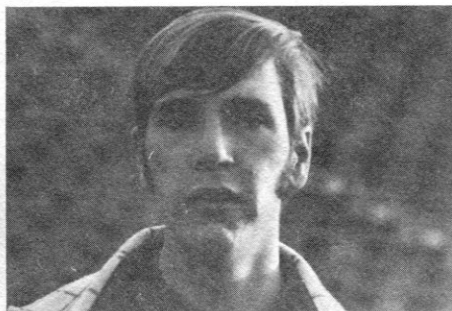
Randy Smedley: Slow to anger, quick to comment, Smeds battles the library "Z-monster" daily. The Chambersburg government major busies himself in the L.C.C.



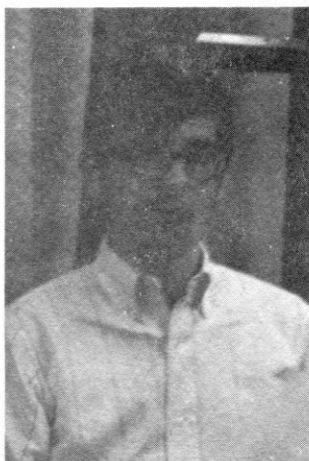
Mark Sweetland: Mark needed all his dry humor when he broke his foot twice last year. A chemical engineer from Madison, N. J., Mark hopes to make varsity tennis this year.



Bruce Swoyer: Teddy Bear combines tremendous strength with an angel's warmth. Ambitious engineer from Peckville, Pa.



Keith VanDerbeek: Phi Tau's champion jock, drinker, and punter. A potential eco major from Spring Valley, N. Y., Keith is an honorary resident of the 2nd floor triple.



Jerry Wein: The kosher English major of Port Chester, N. Y. is renowned for witty writing, corny jokes, and an occasional bit of tooting for Dr. Raymond's band.



Roger Weinreb: Rofer crusades for athletic supporters. A cheerful Newton, Mass., history buff, Roger drives a Cougar and wins at paddle ball.





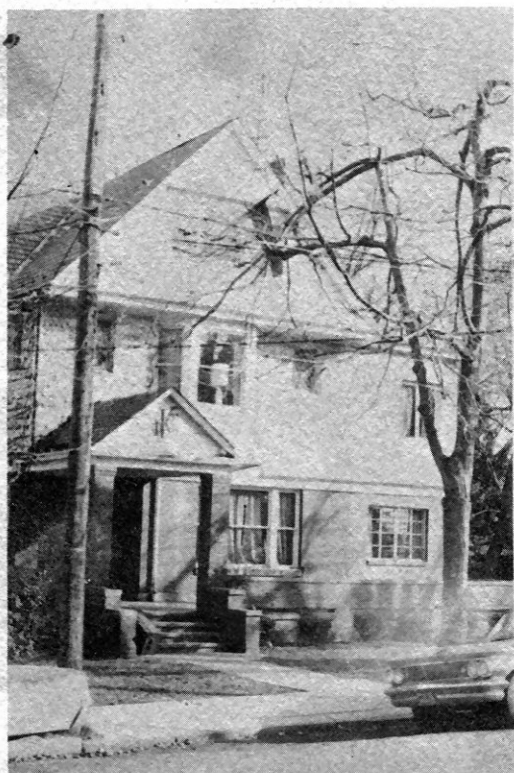
Dwight Weller: Dwigot is the chemistry man: one part R.O.T.C. to two parts hippie. From scenic Boonton, N. J., Dwight fosters a passion for eggs, guitar music, and Star Trek.



Henry Tron: Our ever loyal cook is one of the Brothers. Serves great meals with tender loving care.



Steve Zamore: We occasionally get to see Zames because they don't serve meals in the library. A dedicated biology major, our Brooklyn representative anticipates making house calls in 4 more years.



## HOUSE OFFICERS

President .....	Robert G. Natelson
Vice President .....	A. Timothy Church
Treasurer .....	R. William Hard
Secretary .....	Leonard S. Needle
Social Chairman .....	Richard C. Bondy
Rushing Chairman .....	Robert J. Coraor
Commissar .....	Raymond P. Beauvais
House Manager .....	Kenneth E. Dallmeyer
Sergeant-at-Arms .....	John B. Shields, Jr.
Chaplain .....	Roger L. Weinreb
Senior Pledgemaster .....	Steven K. Sharp
Junior Pledgemaster .....	Dwight D. Weller